

OxySilver. All Data Report 10/11/2009, 3:51:44 PM

Method Parameters**Analysis Lines**

Label	El	Wavelen.	Type	I/S	Bkg Mode	PPP	OBCL	OBCR
Ag 328.068	Ag	328.068	Analyte	-	Fitted	2		

Conditions Sets (All lines share a single condition set)

Pwr(kW)	PlasFlow(L/min)	AuxFlow(L/min)	NebFlow(L/min)	Replicate Time(s)	Stab Time(s)	Multi Frame
1.20	15.0	1.50	0.75	5.000	15	On

Sample Introduction

Sample Uptake(s)	Rinse Time(s)	Pump Rate(rpm)	Fast Pump
30	10	15	On

General Settings**Replicates**

3

Calibration Settings

Calib. Mode	No. Standards	Corr Coeff Limit	Reslopes
Quantitative	1	0.995000	Off

Standard Concentration

El	Units	Standard 1
Ag	ppm	10.00000

Calibration Parameters

Label	Thru. Blk	W/Fit	Curve Type	Max Error	Min Conc	Max Conc	E/Curve %	U/Curve %
Ag 328.068	Off	On	Linear	5.0	0.00000	11.00000	25	400

Units

Unit Name	Multiplier	Divider
mg/L	1	1E6
ppm	1	1E6

Columns**Column**

Ag 328.068

Display Column Flags

Column	o	QC	S	e	uncal	I	n	a	u	v	x	b	p	m	d
Ag 328.068	x	x	x	x	x	x	x	x	x	x	x	x	x	x	x

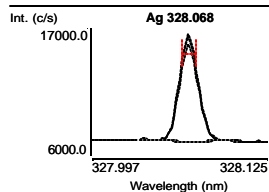
Blank (Blk)

10/11/2009, 3:29:06 PM

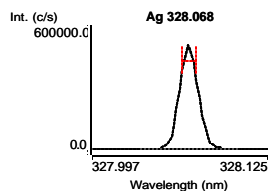
Tube 1

Label	Sol'n Conc.	Units	SD(Int)	%RSD(Int)	Int. (c/s)
Ag 328.068	0.000000	ppm	407.933	5.5	7456.78

OxySilver. All Data Report 10/11/2009, 3:51:44 PM



Label	Sol'n Conc.	Units	SD(Int)	%RSD(Int)	Int. (c/s)
Ag 328.068	10.0000	ppm	4014.125	0.9	423166



Ag 328.068 Calibration (ppm) 10/11/2009, 3:36:47 PM Correlation Coefficient: 1.000000

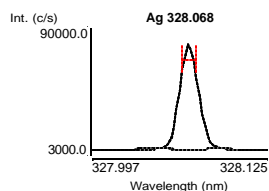
Label	Flags	Int. (c/s)	Std Conc.	Calc Conc.	Error	%Error
Blank		7456.78	0.000000	0.000000	-	-
Standard 1		423166	10.0000	10.0000	0.000000	0.0

Curve Type: Linear

$$\text{Equation: } y = 41570.9x + 7456.8$$

Total Silver (Samp) 10/11/2009, 3:49:23 PM Tube 3
 Weight: 1 Volume: 1 Dilution: 1

Label	Sol'n Conc.	Units	SD	%RSD	Int. (c/s)	Calc Conc.
Ag 328.068	1.27271	ppm	0.011097	0.9	60364.4	1.27271 ppm



Ionic Silver (Samp) 10/11/2009, 3:51:24 PM Tube 4
 Weight: 1 Volume: 1 Dilution: 1

Label	Sol'n Conc.	Units	SD	%RSD	Int. (c/s)	Calc Conc.
Ag 328.068	1.20948	ppm	0.018665	1.5	57736.2	1.20948 ppm

